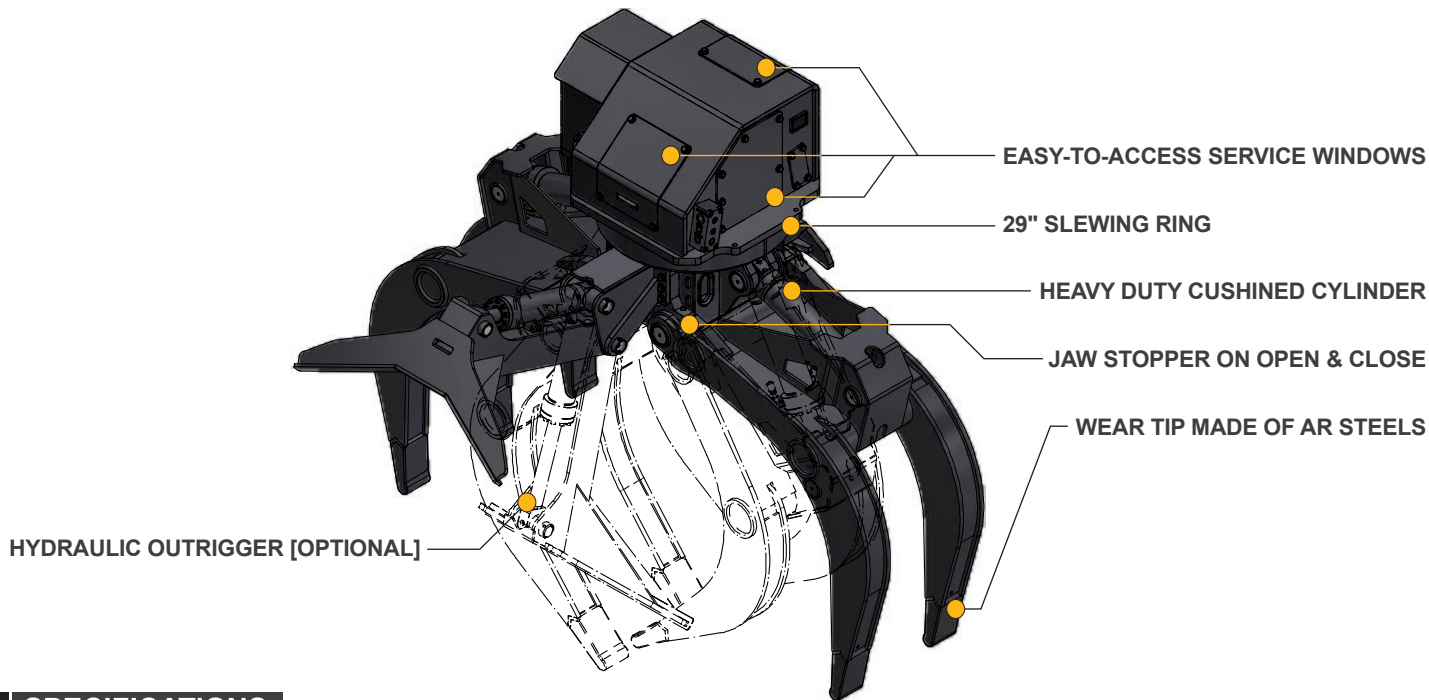


FEATURES

- Powerful Rotating Torque using Excavator Type Piston Motor and Planetary Gearbox.
- Heavy Duty Construction with Large Slewing Ring.
- Large Service Windows and Spacious Rotator.
- 5,000psi Rated Heavy Duty Cylinders.
- Jaw Stoppers on both Open and Close.
- Hydraulically Balanced Synchronized Jaws.
- Optional Bolt-On Hydraulic Outrigger for Handling Tree Length Logs.



SPECIFICATIONS

MODEL	Opening		Closing		Width		Height*		Capacity		Weight*	
	[mm]	[inch]	[mm]	[inch]	[mm]	[inch]	[mm]	[inch]	[m ²]	[ft ²]	[kg]	[lbs]
HPG30-08	1,970	77.6	155	6.1	1,060	41.7	2,120	83.5	0.8	8.5	1,930	4,250
HPG30-10	2,190	86.2					2,230	87.8	0.9	10.0	2,050	4,510
HPG30-12	2,385	93.9					2,350	92.5	1.1	12.0	2,140	4,710

* Height/ Weight without lugging & Hydraulic Outrigger.

MODEL	Torque		Holding Torque @ max. crossover relief setting		Speed	
	[kgf-m]	[in-lb]	[kgf-m]	[in-lb]	[RPM]	
Type EF (Standard)	2,630 @210bar	232,800 @3,000psi	3,310 @260bar	287,100 @3,700psi	10.0 @77lpm	10.0 @20.5gpm
Type DC (Optional) **	2,070 @210bar	179,900 @3,000psi	2,210 @220bar	191,900 @3,200psi	8.4 @53lpm	8.4 @14gpm

** Compatible with most existing rotation circuit

